



# December & January 2023

The Magazine of the United Reformed Church  
Stratford-upon-Avon



*Worship, Witness and love for others through Jesus Christ*

**The United Reformed Church  
Rother Street  
Stratford-upon-Avon**

**Website: [www.stratforduponavonurc.co.uk](http://www.stratforduponavonurc.co.uk)**

**Local Leader**

Dr Peter Horrocks

Roseleigh, Barton Road, Welford-on-Avon, CV37 8EY.

Tel: 01789 750971

Email: [peterhorrocks@doctors.net.uk](mailto:peterhorrocks@doctors.net.uk)

**Church Secretary**

Mairi Macdonald

**Treasurer**

Ashley Pettifer

**Elders**

Ileen Fisher

Ann Jones

Kirsty Knott

Barbara Lister

Mairi Macdonald

Ashley Pettifer

Sarah Salmon

Ann Walters

**Finance and Fabric Committee**

Rob Fradley

Peter Horrocks

Tom Purves

Sarah Salmon

Ann Jones

Iain Kelso

# THOUGHTS FOR DECEMBER

## 'I Wish it could be Christmas every day'

My thoughts this month have been stimulated by Christmas songs. Two of our grandchildren stayed with us over the weekend and they requested that we watched the movie 'Love Actually' – that classic Christmas movie from 2003 – that's 20 years ago this year – can you believe it! So, after we watched it, we were all humming some of the songs, and whilst our granddaughter was doing her homework the next day, she was listening to a Christmas playlist, and so there were other Christmas songs going through our heads. Usually, we don't allow carols and Christmas songs before December, but you can't stop grandchildren from enjoying themselves, can you?



I have chosen 'Peace on Earth' as our Christmas headline this year – it seemed appropriate in view of all the war and violence we see on our screens at the present time – particularly in Gaza and Ukraine. The phrase, of course, comes from the song that the angels sang to the shepherds on that first Christmas night. There is a song written in 1955 by Jill Jackson-Miller. I don't think it was originally a Christmas song, but it has been adopted, as such, for many years now. The first two lines are crucial:

*"Let there be peace on earth  
And let it begin with me. "*

We may not be able to solve the interminable problem that is Israel and Palestine, but we can try in our own little world to promote peace - and hope that we influence others and that the influence spreads more widely. The second two lines are:

*"Let there be peace on earth  
The peace that was meant to be."*

Jackson Miller wrote the song after the failure of her marriage and after discovering what she called 'the life-saving joy of God's peace and unconditional love'. We can't argue with that, especially when we think about the love of God in sending Jesus to

us – the reason for Christmas.

The headline song of Love Actually is the one sung by Billy Mack: ‘Christmas is all around’.

*“I feel it in my fingers, I feel it in my toes  
Love that's all around me, And so the feeling grows.*

*It's written in the wind, It's everywhere I go,*

*So if you really love Christmas, C'mon and let it snow”*

Of course, in the film, the song is a parody of ‘Love is all around’, and the last word of the second verse should be ‘show’ instead of ‘snow’. It is certainly true that around Christmas time there is a lot of bonhomie and love shown. What the song is telling us is that we shouldn’t bottle it all up, but we should openly show that love to all around us.

The final song that I want to mention is ‘I wish it could be Christmas every day’:

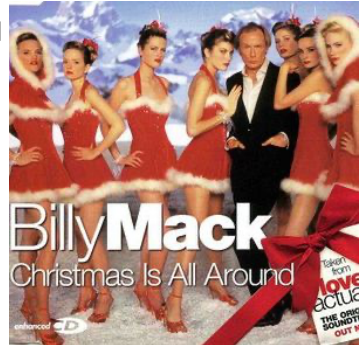
*“Well, I wish it could be Christmas every day  
When the kids start singing and the band begins to  
play*

*Oh I wish it could be Christmas everyday  
Let the bells ring out for Christmas”*

We all find that Christmas feeling very heart-warming, don’t we? It isn’t mentioned in the song but what could be more heart-warming than the love of God expressed at Christmas? The song finishes with the line:

*“Why don't you give your love for Christmas?”*

Once again, we are encouraged to give our love at Christmas. We do all tend to be more generous at Christmas: Linda and I compile a list of charities that we support at Christmas in addition to our normal giving during the year. We are all inclined to be more generous at Christmastide, for instance, to the homeless in the lead up to Christmas; I think charities realise this. What the song is encouraging, I think, is that our love and our giving should happen all the time – not just at Christmas. For example, we should look after the homeless all year round, not just because we feel the love and the cosiness of Christmas.



One of our past visiting preachers, Roger Hall, always used to say that there was an awful lot of teaching about religion in hymns. I think I may have said this before, and I have certainly used the notion in some services in the past, but perhaps there is also quite a lot to learn from secular songs as well. Particularly, about love, peace and how we treat other people. Christmas songs are classic examples of that.

Linda and I hope that you all have a peaceful Christmas, that you experience the love of God in giving us Jesus, and that you are able to show that love and peace to others. We are Christians, after all, and we should be spreading the Christmas peace and love to 'all around us', not just at Christmas but the whole year round.

*Peter*

## FAMILY NEWS

Katie has recently moved into a new flat at Shakespeare Court in Stratford. We wish her peace and happiness at her new address.

Peter has recently had a successful cataract operation.

Love and congratulations go to Ann and David on the occasion of their Golden Wedding Anniversary on 29th December and to Ann who celebrates her 70th Birthday on 28th January.

Jill & Rob's son-in-law, John (Rebecca's husband) has had a heart attack. He is now home after having four stents inserted. It's a worrying time for the whole family, so they need our thoughts and prayers.

## FLOWER ROTA

I would like to thank everyone who has provided a flower arrangement for Church on the Sundays when we have had a service during this past year. The new rota will be put on the notice board (by the kitchen) on 3rd December and I would be grateful for your continuing support. As always, I am very happy to buy flowers and put them in place for anyone who is not able to do so. Thank you again.

## ST BASIL'S CHRISTMAS CARD

The St. Basil's Tree Card will be available again this year for those who choose to display one card for their friends in the congregation and give a donation in lieu of

postage/additional cards. We have been supporting St. Basil's at Christmas for many years now - a very worthy cause as they provide shelter and positive help and support for young people in need in the Birmingham area and other venues in the Midlands. The "tree" will be available at our service on the 3rd December and during our tree festival and during the Carol Service and Christmas Day service. Please contact me with any queries. Thank you.

*Ileen Fisher*

## A SAD DEPARTURE

We heard recently the sad news that David Mears, the Artistic Director of the Bear Pit theatre, has decided to step down. Originally, it was David's suggestion and request that the Bear Pit establish the theatre in our church hall, 15 years ago. The church has a lot to thank David for, because of his foresight. The theatre presence has taught us in the church a lot: how to organise ourselves more professionally, how to advertise ourselves to the community, giving us increased opportunities to reach out to and interact with our local community. In addition, the income from the lettings has made us financially more secure. So from our point of view we are sad that David is stepping down. The Bear Pit Theatre will continue and the Elders have just agreed to extend the lease for an extra six years, so that their increased longevity will allow them to apply for more charitable funding.



Here is an article detailing David's achievements:

### **Artistic director stepping down**

Founding Director of The Bear Pit Theatre, David Mears, is to step down after 15 years of continual dedicated service as artistic director.

Formed in 2008, The Bear Pit established a base in Stratford-upon-Avon's United Reformed Church, converting the church hall in response to a lack of affordable space for amateur theatre groups and artists. The hall, previously used for church events, was in 2012 transformed into the town's first little community venue of a 100 seat auditorium, utilising the RSC's Courtyard Theatre seating. Under David's artistic directorship, The Bear Pit became a member of the Little Theatre Guild in 2014, joining a number of other popular little theatres across the country. The

company also established a unique link with the RSC to ticket all Bear Pit Theatre events.

Alongside his role as artistic director, David has been a trustee of The Bear Pit since 2011 and a Bear Pit associate artist. He has directed and performed in over 20 Bear Pit productions, including Roald Dahl's *The Witches*, *The Ladykillers*, *Toad of Toad Hall*, Jim Cartwright's *Two* and as part of the First World War centenary, *Blackadder Goes Forth*.

Together with a troupe of Bear Pit actors, David worked on the RSC's Open Stages projects and performed *Bottom* in the RSC's 2016 production of *A Midsummer Night's Dream*, which saw Bear Pit actors perform the *Mechanicals* on the Royal Shakespeare Theatre stage alongside a cast of professional actors, directed by Erica Whyman.

David said, "Leading The Bear Pit Theatre has been a huge privilege. Reimagining what was once a badminton hall into a fully functioning theatre has been a challenging achievement that I will always be proud of. I have remained loyal to The Bear Pit for so many years, volunteering all of my personal time to ensure the success and growth of both the theatre company and venue."



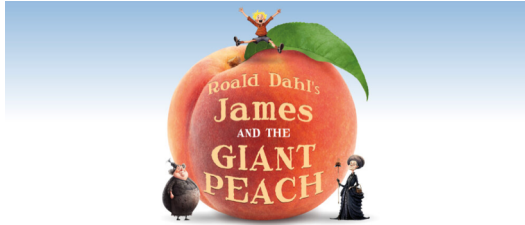
"It has been a real joy to be part of a small group of dedicated people, who rolled up their sleeves and turned their hand to anything and everything; helping to make the theatre what it is today that so many know and love. I would like to thank all of the volunteers who have generously given their time and support, in particular the original Bear Pit trustees and the URC Elders, who could see the potential of these spaces. I would also like to thank the Stratford Town Trust who funded the dressing rooms' building project and our community cinema and the RSC for their collaboration.

Lastly and most importantly, I would like to thank our audiences, who have wholeheartedly supported our journey from its inception by attending our shows, making donations and spreading the word - I thank you.

David said of his decision, "The time has come for me to set my sights on new challenges and the many projects I still hope to achieve both professionally and personally. Now is the time for me to rededicate myself to my loving family, friends and fun - the next adventure is just beginning."

# WHAT'S ON AT THE BEAR PIT

## James and the Giant Peach (Wood): 1st to 10th December



A Bear Pit Theatre Company Production: James and the Giant Peach by Road Dahl adapted by David Wood is directed by Emily Myerscough.

James lives with his mean Aunt Sponge and Aunt Spiker, they make his life miserable. Until .... one day, he meets a mystical man who gives him the most magical beans. James' world soon becomes very peculiar as he finds himself in a giant peach having wonderful adventures with an amazing group of giant insects. This Roald Dahl classic is packed full of humour and ridiculousness for all ages. Prepare to be taken on a journey of crazy characters, creative costumes and colourful storytelling.

Returning to the Bear Pit following the sell out success of The Twits in 2022 and repeated performances earlier this year, Emily, show Director, gives an insight to what she has in store ... "Peach promises to be a spectacular feast for your senses. Expect organised chaos, revolting aunts, fantastical costumes and a collaboration of wonderful local talent. And... a gigantic peach!"

**Tickets: £15 (concessions £12)**

## Meet on the Ledge: 15th to 16th December at 8pm



The Bear Pit Theatre welcomes back Warwickshire-based folk-rock favourites Meet On The Ledge for their annual two-night extravaganza.



Founder members Ron Holmes and Allen Maslen still remain from when MOTL began as a folk duo in 1992. Today they are a five-piece band, augmented by keyboard player Steve Bird, drummer Bo Davies and newest recruit Craig Sunderland on bass. Keyboardist Steve has an impressive pedigree, having played keys for 1960s chart topper Eden Kane (“Well I Ask You”), 70s chart topper Don Fardon (“Indian Reservation”) as well as being in the backing band for the legendary Marty Wilde. Drummer Bo was lead percussionist for Wasps Rugby Club at the Ricoh Arena in Coventry, and was also a founder member of festival favourites Sambassadors of Groove. Bassist Craig has a growing reputation as one of the finest multi-instrumentalists on the UK folk circuit. He is also the proud custodian and organizer of the legendary Wurzel Bush Folk Club in Rugby.

MOTL have been busy this year with their Dark Side of the Ledge tour, featuring exclusively the music of Pink Floyd. While these two Bear Pit concerts will predominantly feature MOTL’s own original material – along with some traditional folk classics – they will certainly be slipping a couple of Floyd numbers into the set. Critics and reviewers have tried many times to pigeonhole MOTL’s music, with varying degrees of success. The band’s favourite description of their music is “Big Country in a bar brawl with Thin Lizzy” although they are perhaps best known for their gentler material, such as their original lifeboat epic “The Mary Stanford of Rye” which has become a folk classic in its own right.

**Tickets: £12.**

## **Bedknobs and Broomsticks – Cinema: 17th December at 3pm**

**Bear Pit Community Cinema, *Supported by Stratford Town Trust***



An inexperienced witch’s adventures take her and her children from WWII England to a mythical land where jungle animals rule—all via an enchanted flying bed.

Director Robert Stevenson. Released 1971. The cast includes: Sam Jaffe, Angela Lansbury, Roddy McDowall, David Tomlinson. Cert: PG. Running Time 118 minutes.

**Tickets: £5 on the door (cash or card) and available online.**

## Mission Impossible – Dead Reckoning: 6th January at 7.30pm



### **Bear Pit Community Cinema - Supported by Stratford Town Trust**

Ethan Hunt and his IMF team embark on their most dangerous mission yet: To track down a terrifying new weapon that threatens all of humanity before it falls into the wrong hands. With control of the future and the world's fate at stake and dark forces from Ethan's past closing in, a deadly race around the globe begins.

Confronted by a mysterious, all-powerful enemy, Ethan must consider that nothing can matter more than his mission—not even the lives of those he cares about most.

Cast includes: Tom Cruise, Rebecca Ferguson, Simon Pegg. Directed by Christopher McQuarrie. Production Year: 2023. Cert: 12. Running Time 164 minutes

**Tickets: £5 on the door (cash or card) and available online.**

## **CHILDREN IN CARE BECOME ADULTS; WHAT HAPPENS THEN?**

As a young housemother of The Children's Society, older children were not usually in the remit. Looking after ten to sixteen children between the ages of 3 and 16 was the norm and lectures on Child Care laid emphasis on these years, as our clients either came to us from the nurseries or from a family breakup. Trauma accompanies admission and sadness rears its ugly head regularly throughout the year, although stalwarts of years within the Care System comfort and succour those who are struggling.

Children who started life in care often failed in the big, wild world once care finished at the age of 16/18. There were, of course, successes, but perhaps that was because they had often found backers en route who would support them once the doors had closed. Imagine being shunted away from your home just because you had reached

the age of majority.

One such lad rang the bell on the main door and I opened it to a bedraggled, sad but pleading young man, who introduced himself, saying, “ I’m afraid you won’t know me, but I used to live here before I joined the Navy. I’ve been slung out and I didn’t know where to go.”

Naturally, I invited him in and took him through into the sitting room, offered him a drink and left him with a magazine. (Sounds as though he was in a medical waiting room as it was when I was young - a magazine to keep your mind off the forthcoming horror.) En route to the kettle, I put my head round the office door and informed the Housemaster, who was busy with ‘paper work’. After the tea and a chat with us, the man-in-charge phoned an appropriate Social Worker, who arrived poste haste. He and the ex sailor (who had worked in the kitchens) chatted and came to the conclusion that a home with an elderly retired clergyman and wife, who had befriended him when he was small, could be the answer to the young man’s prayers. But, he needed somewhere to stay until that could be arranged. There was an obvious stop gap. We had a guest room. No accommodation should stand empty in such a situation. So, the young man helped me make up his bed, empty a drawer for his personal belongings (yes; a drawer held all 18 years of possessions) and collect toiletries from the store room for his use.

Then a dilemma arose. There was no en-suite. Could he have use of the Staff bathroom or should he share the Boys’ bathroom? This was solved when the children arrived home from school. The eldest boy was indignant at the sailor’s return, and had a private word, explaining that the uninvited guest was not well liked because he had ‘wandering hands’. Naturally, the Staff Bathroom was allocated for his use, but he had set times for morning and night time ablutions because of duty times.

The arrangements worked and within a fortnight, he was able to leave and continue his life elsewhere. He settled well and the retired clergyman helped him to find a place of work in the village pub. Clearing tables led to peeling vegetables in the kitchen, feeling at home in his surroundings and eventually to cooking the meals when the chef had a day off.

It wasn’t customary to continue contact with the young adults; often they wanted to stand on their own two feet. After all, we weren’t parents, only people who looked after their needs over their formative years. And, in this case, plugged the gaping hole that appeared in a young man’s life.

As we didn't hear from him directly, we knew he was alright by the affirmation of the Social Worker who kept in touch with him and later attended his wedding!

*Carole Sampson*

## GREEN CORNER

### Our Twelve Tips for a greener Christmas - by A Rocha



How can we be better at caring for creation and each other through healthy, eco-friendly and sustainable choices at Christmas? The ideas below could make a world of difference, and a difference to the world. Take time to pray, reflect, and consider acting on one or two, or however many you like! You may find the change is for life and not just for Christmas.

- 1) Start with your advent calendar. Support overseas farmers by ensuring that your advent calendar, and any Christmas chocolate, is **Fairtrade**. You'll be helping those farmers to make a decent living and encouraging them to farm in a more ecologically sustainable way with every bite.
- 2) Rent a tree. Did you know that, in the UK, 6-8 million real Christmas trees go to landfill every year? With a **Christmas tree rental scheme** you can enjoy a real tree knowing that it will be replanted later. Alternatively, dress up a living tree in your garden – add lots of bird feeders and fat balls, and some outdoor fairy lights to make a feast for your eyes and the birds. Or, visit the **British Christmas Tree Growers Association** to find out about buying an organic, FSC-certified, or locally grown Christmas tree.
- 3) Go for a natural wreath and decorations. Holly sprigs, ivy trails, pinecones, rose hips... Take a bag, go for a walk, and see what you can find! Make sure that you have permission from the land-owner before you start snipping. Don't take too much and do leave some berries for the birds. Source as much as you can from what's already dropped. Then get creative and make a beautiful wreath and Christmas decorations from natural materials.

**4)** Re-use cards and wrapping. Help reduce the huge amount of trees that go into making Christmas tags by re-using old Christmas cards. Recycle the section that carries the greeting, cut out the picture and use that as a tag. You could use fabric remnants and ribbons to make simple, drawstring gift bags in various sizes. Use these for your family and close friends and they could be reused for years to come. Recycled brown paper has a much lower ecological footprint than Christmas wrapping paper. Young children might enjoy decorating it and that might buy you five minutes to get all those other Christmas jobs done!

**5)** Create homemade gifts. Baked goods for example, or buy gifts from a charity shop – you'll be amazed at what can be found. You could buy an attractive glass or vase and fill it with chocolates or flowers. Kilner jars, and other glass jars, filled with small items also make attractive gifts.

**6)** Make sure your gifts don't cost the earth. Many beauty products contain palm oil. Its production causes mass deforestation, air pollution and human rights abuses. Read labels carefully. Avoid products with unsustainable palm oil. There [palm oil free list](#) can help you choose products and retail outlets that are less destructive to the natural world.

**7)** Give the gift of time. Too many unwanted gifts end up in landfill. Here's an idea. What about a gift of cooking for someone once a month for a year, taking them for a coffee, babysitting, house cleaning... or whatever. Just make a 'gift of time gift voucher' and put it in a card for them.

**8)** Dim the lights but not the joy! LED Christmas lights help to save energy and money. You could make your table festive with some candles, scented ones perhaps. Use eco-friendly candles made from beeswax, soy or other vegetable alternatives – avoid paraffin-based candles. And empty jars with some ribbon make beautiful DIY candle-holders.

**9)** Remember the reason for the season. Practising generosity and hospitality is a great way to show Christ's love at Christmas. Invite someone who'd otherwise be on their own, to join you on Christmas Day. It's also a way of reducing energy consumption as they'll share your heating and cooking!

**10)** Try a meat-free Christmas meal. A high-meat diet causes environmental problems, be it overgrazing of land, pollution, or the intensive use of water or fossil



fuels. Have a conversation about this with the people you'll be eating with. Would they consider a meat-free Christmas? Would they be willing to try a tasty new vegetarian recipe? If you do eat meat, make sure it's free-range or organic, and buy it from a local farmer or independent retailer.

**11)** Recycle right. More waste ends up in landfill over Christmas than during the rest of the year, so it's a great time to review your recycling set up. Different local authorities offer different recycling provisions, so find out exactly what you can recycle at home by entering your postcode [here](#). For information on how to recycle anything you're not sure about see [here](#). *Don't forget – most wrapping paper is not recyclable. You can test it by doing the 'scrunch' test. If it springs back, it isn't recyclable. And always remove the sellotape before recycling.*

**12)** Carry on caring for God's earth throughout the year. Nature needs us more than ever. By giving regularly to A Rocha UK, you'll be helping nature flourish here in the UK. You can make a one-off donation or give regularly [here, on their website](#).

Choose a change to make this Christmas. Be gentle on yourself and be realistic, but challenge yourself too. To help you make changes beyond Christmas, sign up to [Wild Christian](#) for more ways to enjoy, nurture and defend nature. To take action as part of your church community, explore our Eco Church resources.

## CHRISTMAS SHOEBOX FOLLOW-UP

**Here's a letter that we received from Ann & Malcom McCulloch about this year's shoebox collection:**

Good morning all

Wow!! What a record year we have had as we packed up 470 shoeboxes (50 more than last year's total). Many thanks to everyone for your donations and those who helped to pack up and load the collection van.

For the 1st time we spent time in Worthing last week and helped out in the warehouse dealing with collections from elsewhere in the country.

The lorry was loaded up and left for Romania yesterday. The final shoebox total was 2,956 (12% up on last year). Four pallets of aid (warm clothes/ blankets/ baby clothes/ Moses baskets) were also sent out.

Please pray for a smooth transition through customs with no issues. In two weeks time a small UK based team from AMEN Trust will fly out to spend time with our Romanian partners and help distribute what has been sent out.

Christmas gift with a difference - give a gift that will help someone else from these options: <https://www.amentrust.co.uk/gift-catalogue/>

Many thanks for your support this year.

**Malcolm & Anne McCulloch**

Thanks to your very generous donations, Linda was able to deliver 21 shoeboxes from the URC to add to those in the lorry below.



## KINDNESS

*"Kindness is like snow - It beautifies everything it covers."*

**Kahlil Gibran**

*"Human kindness has never weakened the stamina nor softened the fibre of a free people. A nation does not have to be cruel to be tough"*

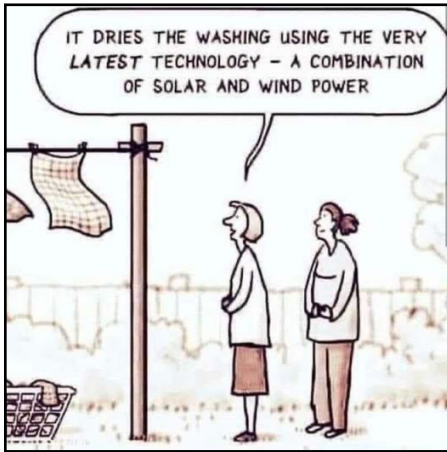
**Franklin D Roosevelt**

*"How do we change the world? One random act of kindness at a time."*

**Morgan Freeman**

*"Do your little bit of kindness where you are. It's those little bits of good, put together, that overwhelm the world"*

**Desmond Tutu**



## FAVOURITE CHRISTMAS PRESENTS

### 1919: Meccano sets

This predecessor to the Erector Set was first produced in the early 1900s, invented by Frank Hornby in the United Kingdom. In 1919, Hornby formed the Meccano Guild to encourage boys of all ages (up to adults) to gather together and get to building.

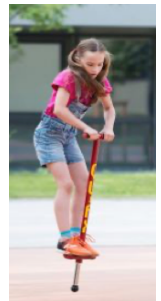


### 1921: Chanel No 5

The invention of Chanel No. 5 was a game-changer in elite circles of women. Now, they could smell fresh and clean all the time, thanks to the assistant of Coco Chanel's perfumer, who accidentally added a higher chemical dose to the mixture. Chanel marketed it immediately, and it was cleared off the shelves once the holidays came around.

### 1922: Pogo stick

The pogo stick was invented in 1919 by Russian immigrant George B. Hansburg, and by 1922 pogo sticks were the most popular outdoor toy for children and adults and featured prominently in magazine and newspaper ads.



### 1925: Electric train set

Electric train sets took over the toy market in 1925 from three companies: Hornby (of former Meccano fame), American Flyer, and Lionel. The trains were expensive, though; one set cost about an average month's salary.



### **1929: Yo-yo**

No one knows exactly when the yo-yo was invented, but its first appearance in the U.S. was in 1927, when Pedro Flores, an immigrant from the Philippines, started carving and selling them. Yo-yos were a toy from his childhood. By 1929, he had two factories in Los Angeles and one in Santa Barbara just to keep up with demand.

### **1936: Monopoly**

In 1935, Parker Brothers started selling the real estate game Monopoly; however, the idea for the game was stolen. On Jan. 28, 1936, the game's actual creator Lizzie Magie called out the thievery on the front page of The Washington Post, which only served to promote the game further.

### **1945: Slinky**

Another year, another toy created by accident. Richard James, a mechanical engineer, was designing springs when he knocked one over and saw how it walked down the shelf. The Slinky wasn't immediately popular when it was first released but became wildly desired after a 1945 Christmastime demonstration of the toy in a Philadelphia department store.



### **1952: Mr. Potato Head**

When the first Mr. Potato Head was introduced, there was no body included. It was a bring-your-own-potato toy of wacky face components. It was the first toy to have an actual commercial, which contributed to it making over \$4 million in sales in the first few months after its launch in 1952.

### **1953: Matchbox Cars**

These tiny cars are tiny thanks to a strange rule at a school. Jack Odell's daughter was only allowed to bring toys to school that could fit into a matchbox, so Odell produced the little die-cast cars and sent her to school with them. All the students loved the cars.

### **1959: Barbie**

When the first Barbie was introduced at the New York Toy Fair in 1959, the audience was skeptical. But one should never underestimate the appeal of a fashion doll: 300,000 Barbies sold in the first year.

### **1980: Rubik's Cube**

The Rubik's Cube was invented in 1974 by a professor in his mother's Budapest apartment. The twisty-turny puzzle cube became really popular in 1980, though, when it debuted at the New York toy fair. The toy was immediately popular, and about 100 million cubes were sold in the next three years.



# CHRISTMAS QUIZ

## No Googling!! - Answers opposite

1. In the Christmas comedy film "Love Actually", who plays the British Prime Minister?
2. Which British singer had a festive hit with the song "Last Christmas"?
3. The animated character Wallace, from "Wallace and Gromit", has a particular fondness for which type of cheese, often mentioned during Christmas specials?
4. "Only Fools and Horses", a beloved British sitcom, had several Christmas specials. What is the name of the market where Del Boy and Rodney Trotter often sell their goods?
5. Band Aid, a British charity supergroup, released which song in 1984 to raise money for anti-famine efforts in Ethiopia?
6. In the song 'Twelve Days of Christmas', how many ladies were dancing?
7. Who wrote 'A Visit from St. Nicholas', the famous Christmas poem with the opening line 'Twas the night before Christmas'?
8. Alphabetically, which of Santa's reindeer comes first?
9. Snowflakes are often portrayed as being 6 sided but studies suggest that less than what percentage of snowflakes exhibit the ideal six-fold symmetric shape?  
a) 0.1% b) 1% c) 10%
10. A Bellini is flavoured with which fruit?
11. Bethlehem is a tiny village in which UK country?
12. What is the name of Ebenezer Scrooge's partner from the play, A Christmas Carol?
13. Which country does St. Nicholas originally belong to?
14. Which was the first song to be broadcast from space when the Gemini 6 crew played a practical joke on Mission Control, suggesting they had spotted a low flying object?
15. Which British actor narrated the 1982 Christmas animation "The Snowman"?

# Sunday Services at 9.30am

3rd December	Communion 1st Sunday in Advent	Peter Horrocks
17th December	Carol Service at 6.30pm	Peter Horrocks
25th December	Christmas Day Celebration at 10am	Peter Horrocks
7th January	Communion	Revd Brian Mason
21st January	Morning Service	Simon Burne

## F&F Rota

Please report any problems with the buildings  
in December to:

Ashley Pettifer: 01789 293578 or Rob Fradley 01789 269134 / 07765 412606

in January to:

Tom Purves: 01789 293013 or Ann Jones: 01789 266177 / 07580 557163

## Flower Rota

3rd December	Linda Horrocks
17th December } 25th December }	Ileen Fisher and helpers

## Link

**The February 2024 edition of Link will be published on the 4th February 2024**

The deadline for submission to the next edition is Monday 29th January 2024

Please send us your articles, pictures, humour etc.

**Editors contact details:**

**Telephone: 01789 750971 Email: [peterhorrocks@doctors.net.uk](mailto:peterhorrocks@doctors.net.uk)**

## QUIZ ANSWERS:

1. Hugh Grant. 2. George Michael. 3. Wensleydale. 4. Pecham. 5. Do they know its  
Christmas. 6. 9. 7. Clement Clerk Moore. 8. Blitzen. 9. (a). 10. Peach. 11. Wales.  
12. Jacob Marley. 13. Turkey. 14. Jingle Bells. 15. David Bowie

# PEACE <sup>ON</sup> EARTH

Christmas

at the United Reformed Church

**Christmas Tree Festival**

Friday 15th & Saturday 16th

10.30am till 3pm

**Carols by Candlelight**

Sunday 17th December

at 6.30pm

**Christmas Day Celebration**

at 10am